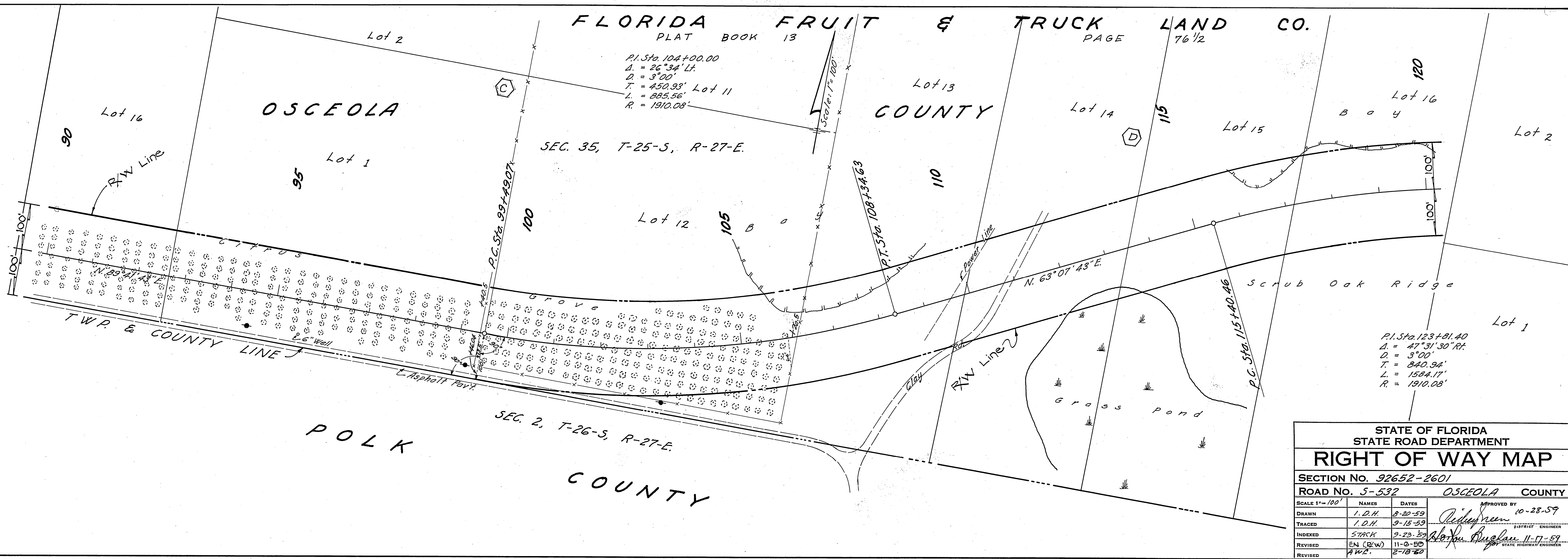
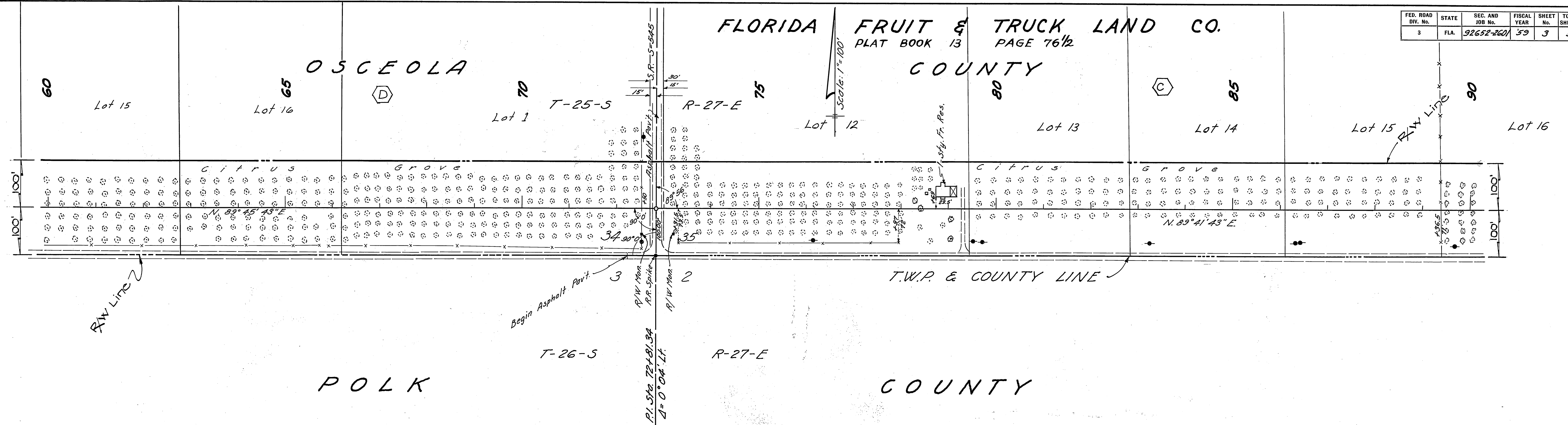
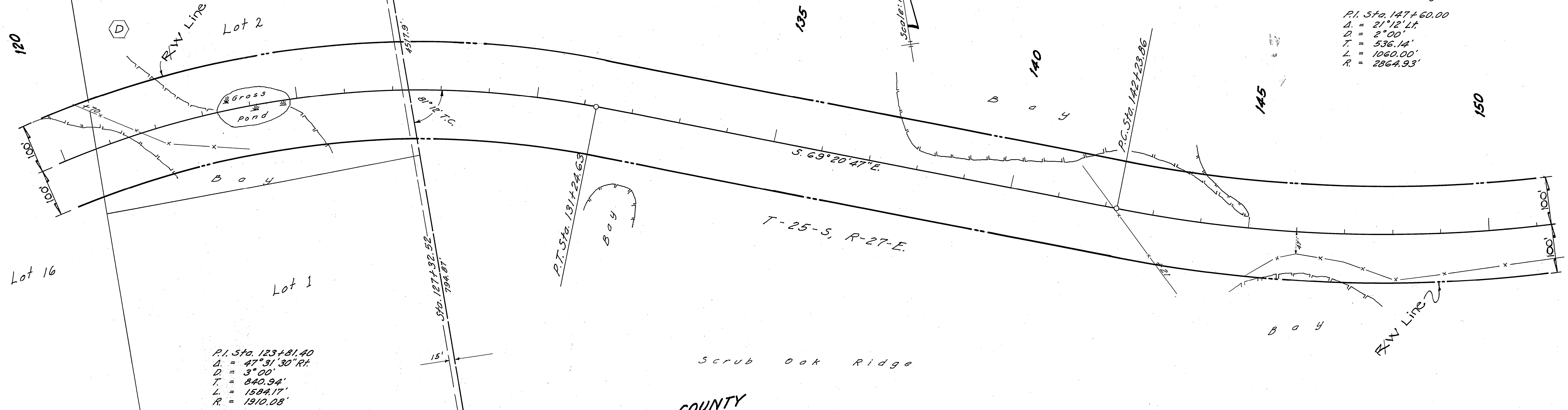




FED. ROAD DIV. No.	STATE	SEC. AND JOB No.	FISCAL YEAR	SHEET No.	TOTAL SHEETS
3	FLA.	92652-2601	'59	3	5



377/76 382/56  
380471 382443



OSCEOLA COUNTY  
POLK COUNTY

OSCEOLA  
BORROW PIT  
NO. 1

FOR DETAILS OF  
BORROW PIT NO. 1,  
SEE SH. 710.1

Pines & Palmettoes

SW DUMP

N. 89°27'13"E

T-26-S, R-27-E

COUNTY

Gross Pond

R/W Line

RGE-27-E

P.I. Sta. 178+67.62  
Δ = 0°23'41"

RGE-28-E

N. 89°50'13"E

L.W. Post & I.P.

COUNTY LINE

STATE OF FLORIDA STATE ROAD DEPARTMENT				
RIGHT OF WAY MAP				
SECTION NO. 92652-2601				
ROAD NO. 5-532		OSCEOLA COUNTY		
SCALE 1"=100'	NAMES	DATES	APPROVED BY 10-28-59	
DRAWN	I.D.H.	8-21-59	<i>Redupren</i> DISTRICT ENGINEER	
TRACED	I.D.H.	9-16-59		
INDEXED	STACK	9-23-59	<i>Abner Bugman</i> 11-17-59 STATE HIGHWAY ENGINEER	
REVISED	EN (R/W)	11-8-59		
REVISED	AWW	2-78-60		

INDEXED 4

377176 382156  
380471 382443





